



ACCELLA

- managing the flows

Accella is a module-based software offering unique functionality for automation, operation and administration for petroleum terminals and oil distribution. Accella can be configured for individual terminals as well as network-based solutions for the central operation of regional, national and global terminal chains.

Based on in-depth knowledge of the value-chain, we offer scalable systems and services with documented increase of efficiency and reduced cost of operation. In today's market, where the trends show tough margins and hard competition, it is essential for management to have web-based access to real-time information from Accella.

Accella//OTC - On Truck Computer

FEATURES

- Real-time fleet control
- Immediate invoicing
- Client runs on a standard PDA
- Browser based – no dedicated software
- Always updated ADR information
- Map viewing & GPS navigation can be integrated
- Reverse camera can be integrated
- E-mail / Internet opportunity from the truck

General

PetroOnline's Accella//OTC is a new innovation in On Truck Computer solutions.

The following functions are some of the benefits provided by Accella//OTC:

- Printout of receipts and invoices from the truck
- Flowmeter / flow computer information is handled onboard the truck and deliveries are according to OIML regulations
- Printout of ADR document, updated by each loading/delivery
- Orders and load information for the truck driver
- Data exchange with the Accella server, when connected (i.e GPRS/UMTS). In case of communication dropout, the last data received is stored in the OTC.
- Accella//OTC can be run on a PDA (Personal Digital Assistant) using Windows Pocket PC operating system or eventually a computer for automotive use with standard Windows.
- Wireless communication with printer
- Supports WLAN

Based on our original Accella Terminal Automation System, the Accella//OTC utilizes technology from Microsoft.NET to combine modern mobile communications with advanced database management and exchange functionality. Using mobile data technology with Accella's onboard truck computer allows for online data exchange with a company's ERP system directly from the truck for information regarding, for example, load orders, load data, load destinations and customers.

The onboard truck computer can be a computer designed for automotive use or a standard PDA. All that is needed to run the Accella//OTC application is a standard web browser.

Topology

The figure below shows the Accella//OTC topology with a central Accella server communicating with the truck through GPRS.

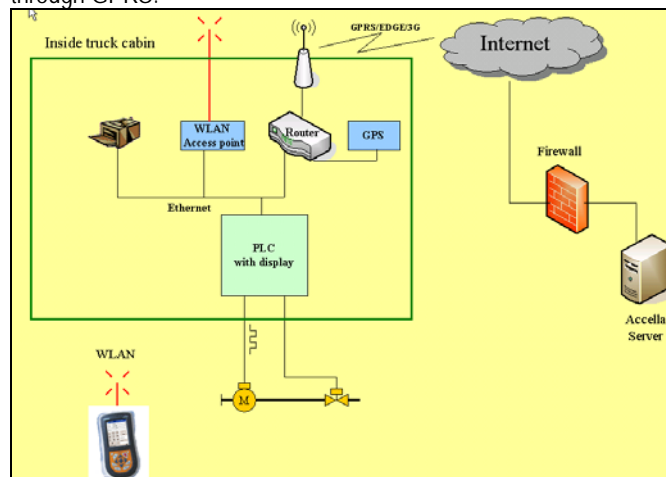


Figure 1: Topology

Accella//OTC - On Truck Computer

User interface

Accella//OTC has an intuitive, user-friendly interface. In a delivery situation, the truck driver can easily select the right order or customer from a scroll-down menu, and enter (or accept a preordered) volume. In a drop situation (without a flowmeter), actual delivered volume (and from which compartment(s)) is entered.



Figure 2: PDA used for delivery

Delivery status in Accella

For transport administration, the "Delivery status" submenu in Accella gives online status information of the compartment volumes for the complete fleet of trucks. If the loading is done from a terminal/depot with Accella terminal automation system, the status is updated in real-time after the loading. Otherwise, the loading information can be manually key-entered by the driver, using the onboard truck computer or PDA. For each delivery, the status is updated in real-time. A very useful tool for the transport administration personnel!

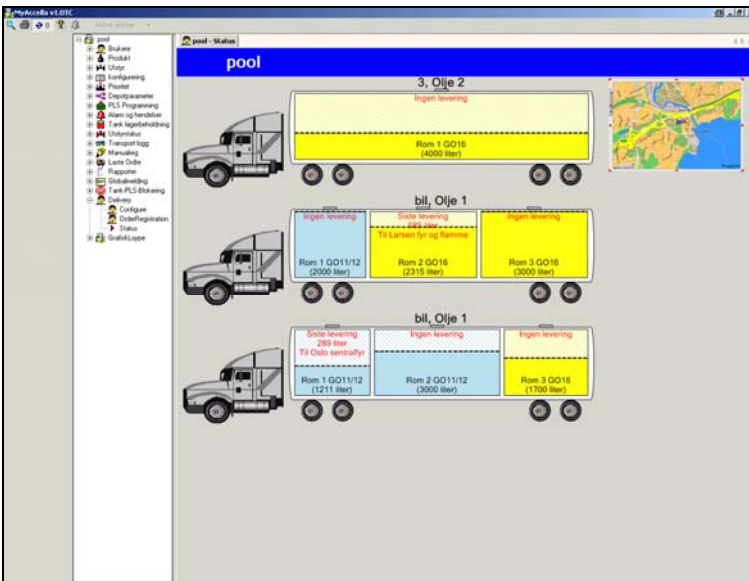


Figure 3: Truck status

PetroOnline AS
P. O. Box 6088 Etterstad Phone: +47 23 06 03 40
NO-0601 OSLO Fax: +47 23 06 03 41
E-mail: info@petroonline.no
www.petroonline.no