



ACCELLA

- managing the flows

Accella is a module-based software offering unique functionality for automation, operation and administration for petroleum terminals and oil distribution. Accella can be configured for individual terminals as well as network-based solutions for the central operation of regional, national and global terminal chains.

Based on in-depth knowledge of the value-chain, we offer scalable systems and services with documented increase of efficiency and reduced cost of operation. In today's market, where the trends show tough margins and hard competition, it is essential for management to have web-based access to real-time information from Accella.

Accella//CORE

FEATURES

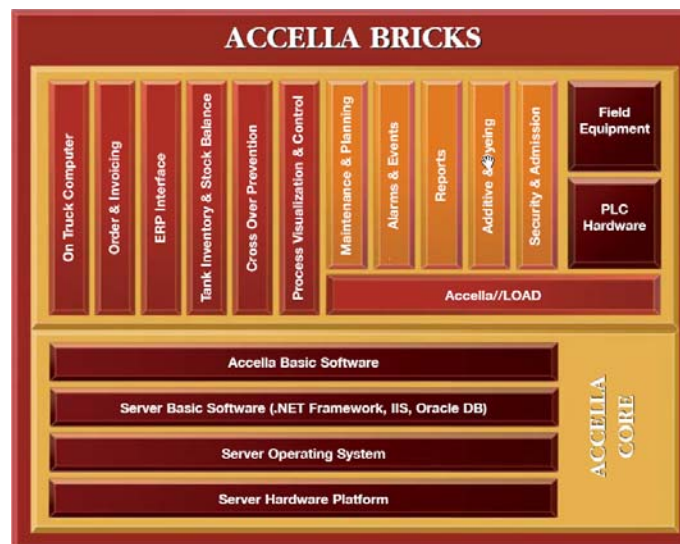
Modular & Flexible

Personalized user interface with MyAccella

State of the art server side technology – Oracle database & Microsoft.NET

Total concept

Accella is a highly modular system where functionality is built up "brick-by-brick".



The "first brick" in an Accella terminal automation system is Accella//Core.

Accella//Core consists of hardware (server), operating system, database, networking software and the basic installation of the Accella software. Accella could be run on one server or several servers – ex. one application server and one database server.

The Accella client, the graphical user interface, is build with Microsoft.NET-technology and is accessed through a web browser (Internet Explorer). The communication between the client and the Accella server is based on web services.

All data in the system is stored in one or several Oracle databases - one database for each Accella terminal.

Overview of "The brick of Accella"

Accella//LOAD – Based on **PLC hardware** from Omron for process interface, Accella//Load is a highly flexible loading control system for truck, ship or rail loading. As addons to the Accella//LOAD module, following modules are available:

Accella//ADDIT (**Additive & Dyeing**) for control, reporting and administration of additives and blending.

Accella//SEC (**Security & Admission**) provides enhanced functions for authorization, authentication, auditing and security.

Accella//REP (**Reports**) gives the possibility for own report configuration and also prepares data for Excel Pivot reports

Accella//AEN (**Alarm & Event**) for enhanced alarm handling incl. alarms to mobile or PDA.

Accella//MPS (**Maintenance Planning System**) for follow up of critical components

Accella//SCADA (**Process Visualization & Control**) – graphical view of the ongoing processes (loadings etc.)

Accella//TISB (**Tank Inventory & Stock Balancing**) – full control of stock including product receipt handling

Accella//ERP (**ERP Interface**) – data exchange with company administration system, i.e.SAP

Accella//OTC (**On Truck Computer**) – handling deliveries to customers & service stations

In addition Accella//ARP (**Order & Invoicing**) with Accella integrated with Order & Invoicing systems and

Accella//COP, a concept for **Cross Over Prevention** to prevent cross filling at service stations.

Accella//CORE

Security

There are several levels of built-in security in the Accella system.

The basic authentication level is via standard Windows 2000 and XP "Windows Logon". Accella.NET thus follows the future Windows security mechanisms, such as Smart card readers, etc. Also authentication using an Active Directory is possible. The functions in the user interface are permission based, so a defined user will only have access to "allowed" functionality.

Access from client to server could be set up as an https connection.

Accella.NET is an open system, and other authentication mechanisms can be connected to the system if a higher grade of authentication security is required. An external PKI authentication platform and validation server can for example, authenticate Accella.NET users.

The Accella Client

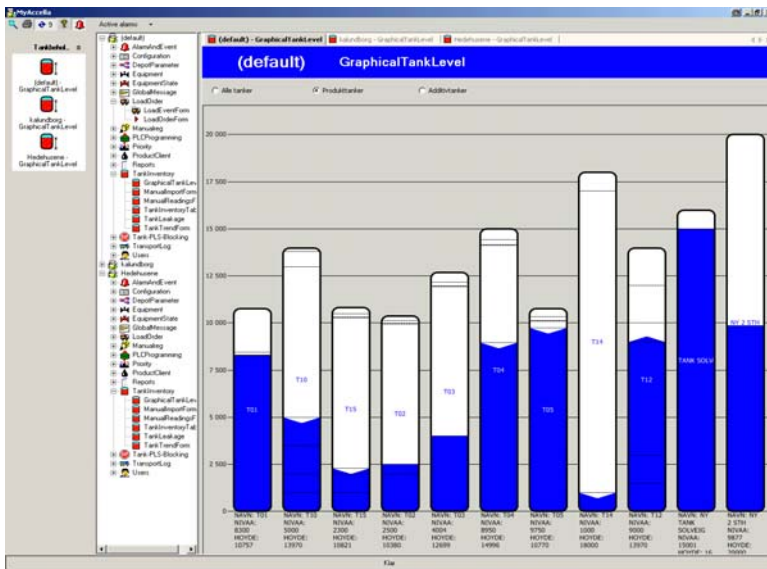
When a user for the first time accesses the Accella client from a web browser, the user downloads a "light" Windows-client to his local computer. The Windows client resides in the workstation's cache until a software upgrade is available at the server. In this way, the Accella.NET client requires minimal loading-time and the flexibility in getting new versions as soon as they are available. Cookies are not stored on the workstation. Auto Deployment from the Accella Server distributes all software.

Client-side software requirements are Internet Explorer and Microsoft .NET framework.

Clients may have to authorize software written by PetroOnline or their contractors. This is a one-time authorization.

Client software will reside in the Accella Client until the Accella server publishes a new version.

Accella has a user-friendly graphical user interface. One part of this user interface could be personalized and configured based on individual users needs. This part of the user interface is called MyAccella. In a central server configuration, all Accella screens from all depots may be accessible from the user interface. For example, a user with responsibility for product supply to the depots might want to configure MyAccella with shortcut keys for opening the inventory information for all depots. Figure 3 below shows MyAccella set up for this purpose. Another example is shortcut keys for detailed loading information for the different depots.



MyAccella

PetroOnline AS
P. O. Box 6088 Etterstad NO-0601 OSLO
Phone: +47 23 06 03 40
Fax: +47 23 06 03 41
E-mail: info@petroonline.no
www.petroonline.no